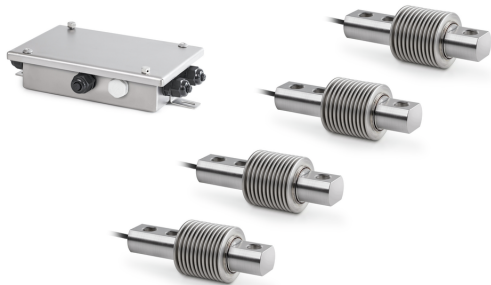


KERN CW 300R

KERN

Scale kit for individual assembly of floor scales - suitable for use in harsh industrial environments with humid environmental conditions



Pictograms

STANDARD



Category

Brand	Sauter
Product category	All-in-one solution & set
Product group	Scale kit
Product family	CW RB

Measuring System

Weighing system	Strain gauge
Weighing capacity [Max]	300 kg
Load cell connection	4-wire

Approval

Accuracy classe	III
-----------------	-----

Construction

Material display housing	No display available
Material load cell(s)	stainless steel
Load cells - number	4

Functions

IP protection - load cell	IP68
---------------------------	------

Packing & Shipping

Readability force [d] (N)	1 d
Dimensions packaging (W×D×H)	520×430×340 mm
Net weight	2,6 kg
Shipping method	Parcel service
Net weight approx.	2,6 kg
Gross weight approx.	3,0 kg
Shipping weight	15,2 kg

Services (optional)

Article number for certificate of conformity (verification)	969-517
---	---------